

# mini-thermacage

a datesand product

small animal warming cabinet



## Introducing the improved mini-thermacage

### The advanced animal warming system with the smaller footprint.

This top quality warming cabinet has been designed for use with IVC units where space is at a premium. Its precision temperature control, simple to use 3 step instructions and easy animal access, make it the perfect solution to post-operative care and blood taking procedures.

Also available, the Thermacage Standard, designed for larger rodent recovery procedures, where space-saving is not as critical. It offers similar specifications, with much larger convalescing compartments

## Thermacage Features

### Small footprint

320mm W, 400mm L, only 150mm H (300mm H with heat unit).

### Integrated

P.I.D. controller, easy adjustment and 3 step operation.

### Accurate

precise temperature calibration with test certification.

### Easy access

high front, spring loaded, hinged access doors for animal security.

### Removable

the dividers provide 4, 3 or 2 compartment configurations.

### Easy clean

removable heat unit makes cleaning and relocation easy.

### Transparent

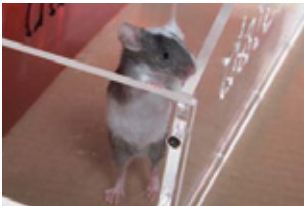
clear easy-view end panels and animal friendly translucent dividers.

### Reliable

simple, efficient and robust design with 12 months manufacturer's warranty.

### Specification

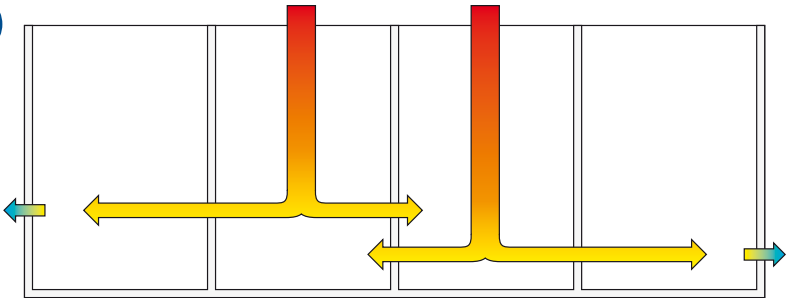
180w heat unit, plug and 3m mains lead. PAT (Portable Appliance Tested). Conforms with Health & Safety and Electricity at Work regulations and ISO standards. 1-100°C temperature scale accurate to +/- 3%. Calibrated/certified with 12 month warranty. CE tested and marked.



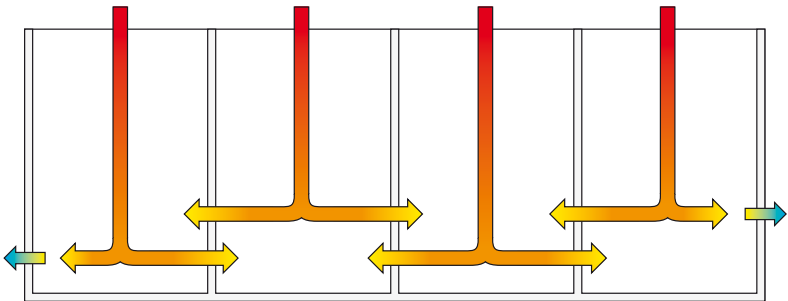
Also available, the Thermacage Standard features a 500w heat unit and is designed for larger rodent recovery procedures, where space-saving is not as critical. It offers similar specifications, with much larger convalescing compartments.

## New Features

### 1 Comparative Airflow Models



Heat Transfer Diagram of the original mini-thermacage



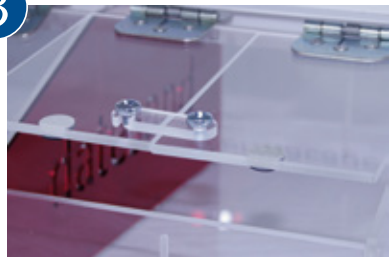
Heat Transfer Diagram of the New mini-thermacage

### 2 Door Damper



Damper pad can reduce noise levels by up to 15dB

### 3 Locking Door Catch



The door catch offers 2, 3 or 4 door flexibility

## New Model Launch

Having acted on client feedback and made modifications, we had the New mini-thermacage put on test at two labs in the UK prior to its launch. We wanted to see that the modifications had the expected and desired impact and that the product remained financially viable.

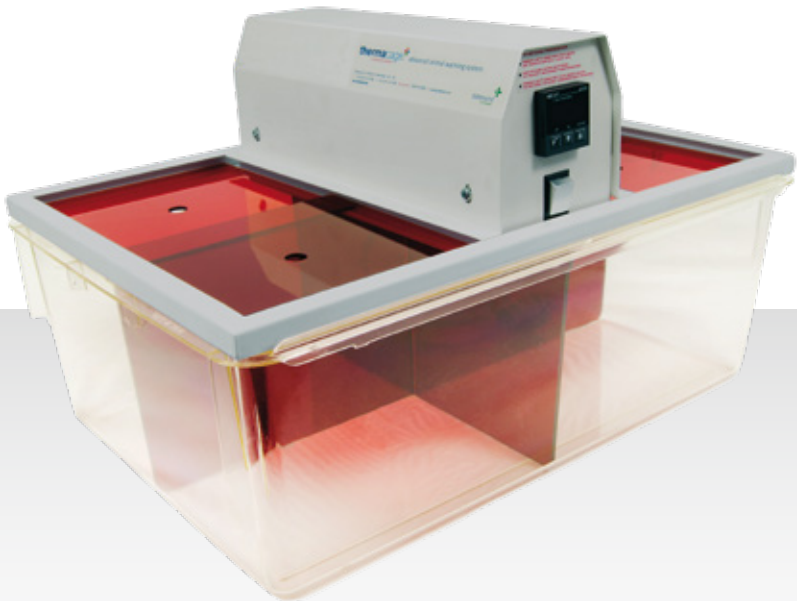
The best method of launching the new product was reviewed in house and the following product launch activities were undertaken:

- Feb-Apr 2010 – in house testing of unit, pharmaceutical testing of unit, academic testing of unit
- May 2010 – e-mailer sent to client base offering trials of new unit
- June 2010 – New mini-thermacage available to purchase

## Conclusion

By surveying users and acting upon client feedback we believe that we have a product which not only is more user friendly for the researcher, but offers the animals a less stressful environment for recovery following procedure or preparation for blood sampling. The refinements improve animal welfare and the accurate temperature and even airflow can reduce the loss of animals post surgery. This in turn can lead to a potential reduction in animal numbers required.

Modification	Beneficial Effect	Impact on animal/researcher
Sound damper pad on lid	Noise reduction on closure	Reduces stress for animal
Catches to enable lid section locking	Easy interchange between 2,3 or 4 compartment doors	Enable one-handed operation in all configurations
Addition of new diffuser	Improved heat flow balance	Greater comfort and safety for the animal



Thermacage is the perfect solution for post-operative care and blood taking procedures. A high quality robust animal warming cabinet with simple 3-step user instructions and precision temperature control.

It has 4 separate compartments each fitted with a sliding lid and vent control. Removable dividers allow adjustable compartment configurations. The temperature control gives a 0°C to 50°C read out of the internal temperature.

The detachable heating unit is constructed from powder coated steel and is powered by a 200w heater. It is also electrically tested.

- Strong polycarbonate base - autoclavable
- Quiet motor - less stress over long periods
- Sliding doors - no trapped fingers & easy access for animals
- Highly accurate temperature control
- Separate parts - easily portable

LASA Winter 2010 prize winner





Datesand Ltd. PO Box 45. Manchester. M11 1XD  
T: 0800 161 5831 (Freephone)  
T: +44 (0)161 274 1080 (International)  
W: [www.datesand.com](http://www.datesand.com)  
E: [sales@datesand.com](mailto:sales@datesand.com)

[www.thermacages.com](http://www.thermacages.com)

